



Sagent™ Direct Link for R/3



Sagent™ Direct Link for R/3 For many companies the construction of an Open Data Warehouse which accesses SAP's financial, manufacturing, marketing & sales as well as human resources modules could prove to be an extremely difficult task. Often, the SAP system contains important organizational information that, in connection with additional data, provides the basis for making strategic decisions. This decisive factor has become a competitive advantage for many organizations. Prompt data executions are crucial in taking advantage of market opportunities.

The Direct Link for R/3 enables organizations to extract, transform and convert their SAP R/3 Data and store it in company-specific open Data Warehouses, so that organizational data can be optimally used for detailed analysis and reporting. Direct Link for R/3 accesses Enterprise Resource Planning (ERP) or Business Information Warehouse (BW) data and automatically loads them into each specific division's Data Warehouse, Data Marts or another analysis application of one's choice. This would, in turn enable end users to effortlessly access and manipulate data, run enquiries and generate reports.

Responsibilities

A well established data pool is essential for the decision making process and as is evident in many cases, the data pool is closely linked with the SAP R/3 environment. Data Warehouses, regardless of the amount and variety of data it contains, can – with Sagent Direct Link for R/3 – be organized in a central and comprehensible metadata repository. This allows one to retrieve the required R/3 table thus making organizational data – that could be used as a basis for decisions – easily and promptly available. The Sagent Direct Link for R/3 also allows for data retrieval outside of the SAP environment. It further allows this external data to be used in combination with the SAP data. One could use the default open tools for the Data Warehouse design, to access the Data Warehouse and for reporting. The outcome is an easy to administer Enterprise Intelligence System delivering R/3 key-data completed with non-SAP-data, thereby creating a competitive advantage for the organization.

Sagent Data flow technology

Sagent's innovative Data Flow technology is a universal solution integrating the extraction and transformation of SAP data for the end user's access. One can also implement an SAP based Data Warehouse without a hitch and also without the need for extra programming or Integration. This in turn, reduces the need for long term maintenance and further developments.

From complex to comprehensible: Metadata mapping

As one of the most high performance systems currently on the market, the SAP R/3 consists of thousands of tables with german terms and abbreviations, as well as additional tables often showing up the underlying schema in complex configurations. To enable the user to understand this vast data labyrinth, Sagent's executes its metadata-mapping possibilities in such a way that complex metadata is automatically read and converted into comprehensible information. Furthermore, this information in turn can be easily transferred into the Sagent environment enabling the creation of Data Warehouses and data analyses.

»With Sagent Direct Link R/3, even those who are amateurs in using the SAP System will be able to retrieve and process data in the SAP R/3 system smoothly.«

Joachim Rolle, Project Manager
Data Processing and Organization,
Stuttgarter Straßenbahnen AG

Swift and effortless implementation

With the Sagent Data Load Server and its extensive features, Data Warehouse developers can chart the data flow, combine and transform data from various sources, load them into Data Warehouses, and complete their implementation swiftly and effortlessly without programming or any other kind of complex modifications to their computer systems.

Swift extraction and transformation

Instead of investing vast resources in the writing and testing of Company specific ABAP-Codes in order to extract SAP Tables from your SAP environment, use the capable modules of the Sagent Data Flow Technology to effectively make enquiries and retrieve data. Sagent Direct Link for R/3 enables you to access SAP R/3 Tables directly, also extracting information from transparent tables. Because Sagent Direct Link for R/3 minimizes the number of required extraction steps in the Data Warehouse loading-up process, it becomes a high-performance data extraction and transformation tool for SAP. With Sagent Direct Link for R/3, Group 1 Software has developed a solution that is easy to maintain, enabling you to access data swiftly and transparently.

Direct web access

Sagent Direct Link for R/3 is integrated in the front-end and back-end components of the Sagent Solutions. This allows end users of the SAP data to effortlessly make queries, relocate the stored data and compile reports and analyses, with help from web browsers and the high performance Sagent tools. Experienced users can directly use the star schema data model that is included in the Sagent system to produce complex multi-dimensional data analyses. Occasional users can, with their browsers, use the Sagent web tool for quick and easy access of existing reports and analyses.

A strong partnership and a bright future with SAP

Group 1 is committed to introducing high quality SAP Solutions in the market. Our technology, with the Direct Link for R/3 fulfils all the necessary requirements from direct access, extraction and transformation of SAP data to the construction of open Data Warehouses.

Group 1 Professional Services

We offer professional consulting support in terms of project implementation or support in order to ensure the success of your projects using Direct Link R/3. Our consultants are highly specialised in the development and set-up of enterprise intelligence solutions and have long term experience and in-depth knowledge in the areas of data warehousing and data management.

Our consulting concept is based on Dr. Kimball's development methods and long term experience. Dr. Kimball is an accredited, leading developer of Data Warehousing technology.

The step by step blueprints and the extensive knowledge transfer of our consultants will secure the success of your SAP based enterprise intelligence systems.

Call us today

The Sagent Direct Link for R/3 has already proven to be highly effective in many organisations with regards to data access, and especially in cases where quick and effective decisions have to be made. Please do not hesitate to call us for assistance in developing a consulting strategy that would ensure the optimal usage of your SAP data with the help of our high performance SAP data extraction tool – Sagent Direct Link for R/3. Tel: +49 (0)89 462387-0

Sagent™ Direct Link for R/3

Features and benefits

High performance Browser for SAP data and metadata

- Easily understood technical terms for the end-users
- Easy data administration even in the long run

Open Data Warehouse Environment

- Data can be extracted from SAP R/3 and combined with external applications
- Quick and flexible implementation
- Cost-effective Solutions

Closer/better integration with Sagent Solutions Components

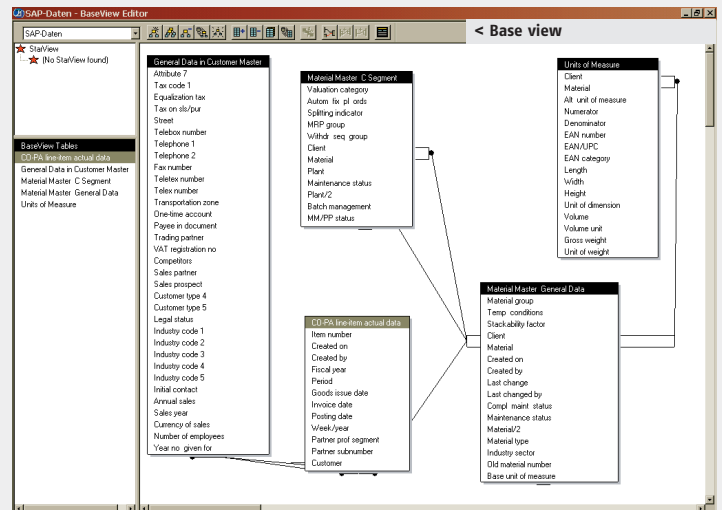
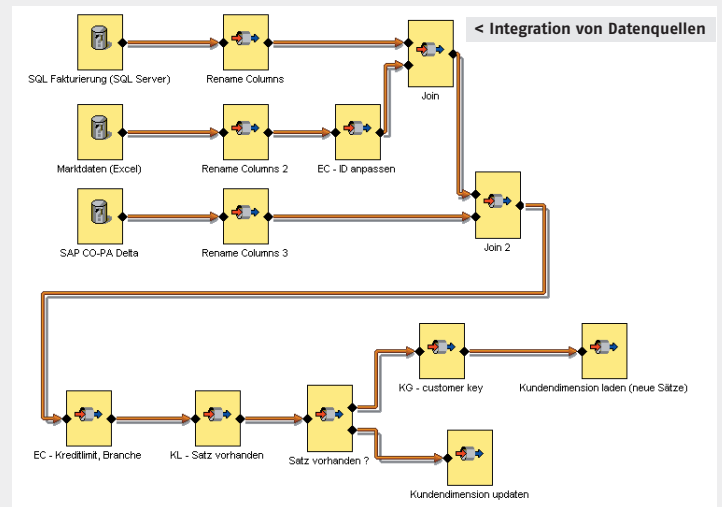
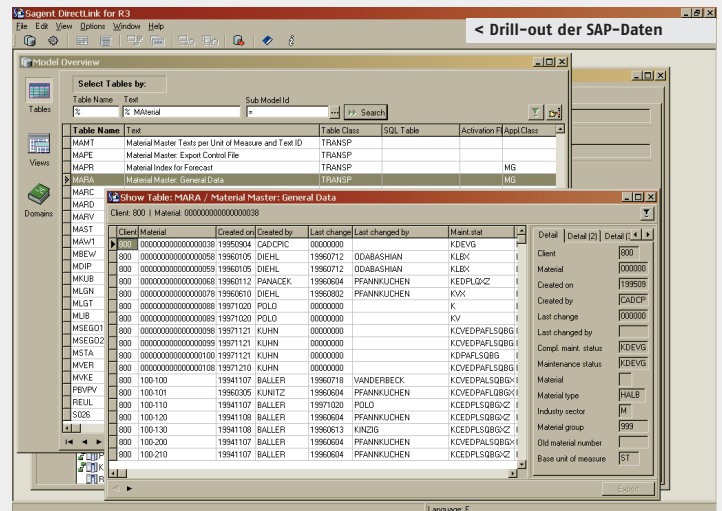
- Extensive, single-source-solution for enterprise intelligence/web based data access

Data Load Server and dataflow-planning

- Quick implementation
- Faster Return on Investment

Direct access of tables

- High performance extraction and conversion
- Easy maintenance



Group 1 Software GmbH
 Grafinger Straße 2
 D-81671 München
 T +49 (0)89-462387-0
 F +49 (0)89-462387-44
 eMail info@group1.de
 Internet www.group1.de

www.group1.de

