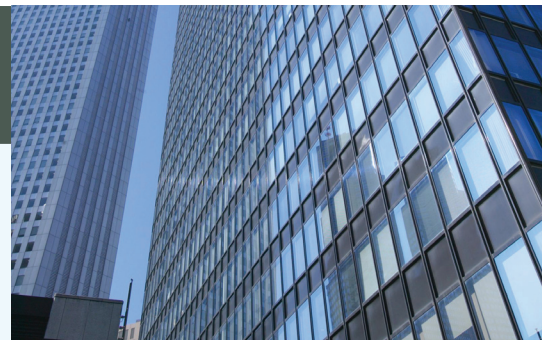


DATA SHEET

# Compass Enterprise™ v4.0

SPATIAL DATA DISCOVERY FOR BETTER PRODUCTIVITY AND FAST, INFORMED DECISION-MAKING.



## Summary

The Compass Enterprise data management system is suitable for all forms of electronic and physical data, with specialised features for handling geospatial database content.

## Benefits

Good data management leads directly to better productivity and faster, more informed decision making.

- Enforce corporate policies
- Realise savings by reducing data duplication and loss
- Align metadata with business processes
- Index, manage, search and preview many data formats

## OVERVIEW

Pitney Bowes Business Insight's Compass Enterprise version 4.0 includes some significant enhancements and improvements as a direct result of user feedback.

### Document Metadata Security

The new document metadata security feature has been added to the Compass Enterprise suite to control access to the Compass catalogue entries. The feature is administered via Compass Master, with restrictions to document metadata added at the time of cataloguing.

**Manage Favourites:** Administrators can choose a group from the Active Directory list and add this to a list of 'favourites'. Therefore making these groups easily selectable when applying document metadata restrictions.

**Manage Restrictions:** Active Directory security groups that are used as restrictions in Compass Enterprise are displayed. By selecting a group it is possible to review all documents with that restriction applied. Document restrictions can be edited and all instances of a restriction can be replaced or removed from the catalogue entirely.

**Manage Documents:** This function allows users to view all documents with restrictions. Documents can be filtered by name or catalogue and the restrictions can be removed or modified.

**Apply Restrictions:** This function allows users to view all documents without restrictions and apply new document metadata security restrictions.

### Extended Database Support

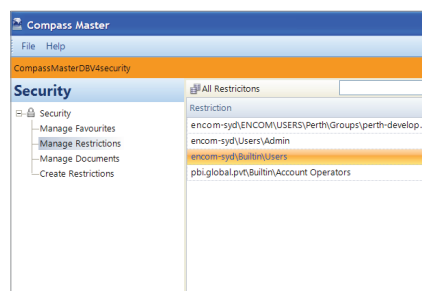
The Compass catalogue and Master databases can now be hosted within SQL Server 2008 and an Oracle environment. Both OS and user name authentication are supported.

Support for corporate spatial databases has been extended to Oracle Spatial layers. Oracle Spatial features can be catalogued, spatially searched, previewed and then opened into the target application.

### Layer Metadata

Supplementary metadata for MapInfo® Tables is dynamically displayed in a new metadata tab. Information displayed includes:

- Table attribute information - column names, type and size.
- Layer projection details including projection name, datum, ellipsoid, origins, and scale factors.



Managing restrictions in Compass Master.

## ASIA-PACIFIC/AUSTRALIA

Level 7  
1 Elizabeth Plaza  
North Sydney NSW 2060  
+61.2.9437.6255  
pbbi.australia@pb.com  
pbbi.singapore@pb.com  
pbbi.china@pb.com  
www.pbinsight.com.au

## UNITED STATES

One Global View  
Troy, NY 12180-8399  
+1.800.327.8627  
pbbi.sales@pb.com  
www.pbinsight.com

## CANADA

26 Wellington Street East  
Suite 500  
Toronto, ON M5E 1S2  
+1.800.268.3282  
pbbi.canada.sales@pb.com  
www.pbinsight.ca

## EUROPE/UNITED KINGDOM

Minton Place  
Victoria Street  
Windsor, Berkshire SL4 1EG  
+44.1753.848200  
pbbi.europe@pb.com  
www.pbinsight.co.uk

| Name               | Type                                   | Mappable                            |
|--------------------|--|-------------------------------------|
| ACT_ST             | Base                                   | <input checked="" type="checkbox"/> |
| <b>Projection</b>  |  |                                     |
| CoordSys Clause    | CoordSys Earth Projection 1, 116       |                                     |
| CoordSys Name      | Longitude / Latitude (Australia GDA94) |                                     |
| Projection Name    | Longitude/Latitude                     |                                     |
| Datum              | GDA 94                                 |                                     |
| Ellipsoid          | GRS 80                                 |                                     |
| Units              |  |                                     |
| Origin Longitude   |  |                                     |
| Origin Latitude    |  |                                     |
| Standard Parallel1 |  |                                     |
| Standard Parallel2 |  |                                     |
| Azimuth            |  |                                     |
| Scale Factor       |  |                                     |
| False Easting      |  |                                     |
| False Northing     |  |                                     |
| Range              |  |                                     |

MapInfo Tab file metadata.

## Compliance

Metadata compliance and specifically support for the ISO 19115 Metadata Standard has been extended.

- Multiple field values – supported in the hierarchical metadata schemas.
- Thumbnails – where possible, a thumbnail is captured at the time of cataloguing and is displayed in navigation screens and exported with metadata statements.
- XSD generation – when metadata is exported, an XSD is automatically generated and will accompany the metadata statements. An XSD provides the syntax and defines the elements and attributes that are represented in the Compass Enterprise XML metadata export.

## Usability Improvements

A Microsoft® Office 2007 style has been applied, with numerous usability improvements included.

- Repositioning of the Filter control.
- Addition of task toolbars in addition to popup menus.
- Use of drag-and-drop to reorganise metadata schema structure.
- Re-designed add document screen within Administration.
- Re-design of metadata view within Navigation.

TO LEARN MORE ABOUT ABOUT COMPASS ENTERPRISE, VISIT [WWW.PBINSIGHT.COM.AU](http://WWW.PBINSIGHT.COM.AU) OR CALL +61.2.9437.6255.

## SPECIFICATIONS

Compass Enterprise v4.0 requires the following:

### Server and Stand-alone Installations

- Microsoft Windows 7, Vista, 2000 (SP2 or higher) or XP (SP2)
- Microsoft SQL Server 2000, 2005, 2008
- Oracle® 10G, 11G
- Microsoft .NET Framework 2.0

### Client Installations

The computer on which you intend to install Compass Commander and Compass Navigator must be running:

- Microsoft Windows 7, Vista, 2000 (SP2 or higher) or XP (SP2)
- Microsoft .NET Framework 2.0

### Internet Browser

Microsoft Internet Explorer 6 or 7.