

DATA SHEET

Engage3D™ & Engage3D Pro™ v5.0

RECREATE YOUR WORLD WITH POWERFUL GRID AND 3D MODELLING, ANALYSIS AND VIEWING.



Summary

Engage3D is a powerful suite of tools that extend the efficiency, analytical and 3D capabilities of MapInfo Professional™.

Engage3D Pro goes even further with more extended functionality and massive data processing.

Advance your MapInfo Professional data visualisation and analysis by creating continuous surfaces from point to polygon data.

Benefits

- Turn your MapInfo Professional into a serious analysis and modelling centre for your business.
- New Command Search functionality.
- Explore the 4th dimension with the temporal analytics of Engage3D and find data trends in those hard to find places.
- With Engage3D Pro create massive, high fidelity grids from detailed source data (like LiDAR LAS file arrays) from the comfort of your MapInfo Professional environment.

OVERVIEW

Version 5.0 of Pitney Bowes Business Insight's Engage3D and Engage3D Pro software adds major new functionality such as the creation, manipulation and modification of multi-gigabyte grids, a new Data Clock display type that enhances GraphMap's temporal analytical abilities, and a search function for finding Engage tools by keyword or tool name.

The 3D interface has been upgraded to provide a fully customisable and flexible environment, and incorporates powerful new model creation and editing capabilities.

General Improvements

- Support for MapInfo Professional™ v10.
- New Command Search function (either by tool name or keywords) means no more browsing through multiple menus to find that elusive tool.

EngageSurfaces

Continued Support for Multi-Gigabyte Grids

Building on the very large grid (e.g. continental-scale) import and visualisation support implemented previously, Engage3D Pro can now create and manipulate massive grids using its powerful Grid Utilities, such as Reproject, Clip, Overlay and Merge.

New Large Grid Formats Supported

- USGS DEM grids
- USGS grids
- GeoTIFFs with embedded elevation

Raster Imagery Support

Support added for large raster image formats (Pro only)

Engage3D Pro can now automatically open and register the following large image formats:

- ER Mapper ECW/ECWP
- JPEG2000/JP2K

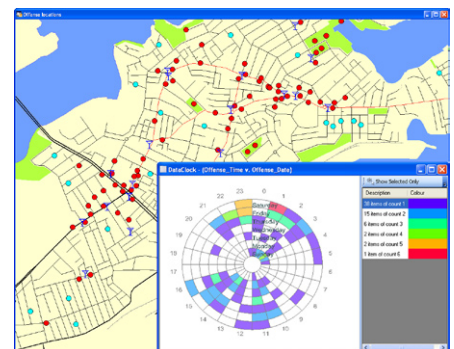
New Create Registered Raster tool

- You can now capture a mapper window as an ECW image.

GraphMap

New Data Clock Graph Type

The new Data Clock graph type is ideal for Time/Frequency or Temporal analysis, such as pollution monitoring in streams, water or salinity-level monitoring in bores, sewerage/ water discharge rates and wind direction related data.



Combine time and location analysis of crime data using GraphMap's new Data Clock display type.

Engage3D™ & Engage3D Pro™ v5.0

PRESENT DATA IN MORE
WAYS THAN EVER TO TRACK
THOSE ELUSIVE TRENDS.

Any of the following date or time intervals can be extracted from a Date/Time field and displayed as either exterior wedges or interior circles of the clock:

- Year
- Month of Year
- Day of year
- Day of Month
- Day of Week
- Hour of Day
- AM/PM
- Minute of Hour
- Second of Minute
- Unique

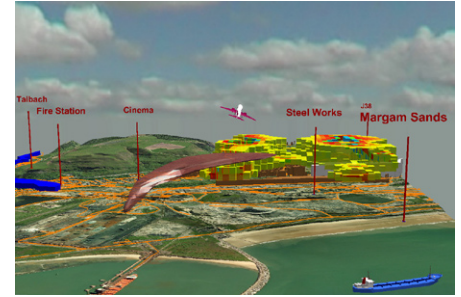
GraphMap Tool Enhancements

- A new visibility control, for filtering displayed points based on a grouping or filter field.
- Data preconditioning converts between data field types and includes a data preview.
- Redesigned Graph Builder wizard for more interactive graph creation.
- Customise the graph colours in a Pie chart.
- Improved setup of multiple table relationships.
- Improved Date/Time support on graphs.

New Flexible 3D Interface

The new user interface of Engage3D Pro includes significant usability enhancements including Microsoft® Office 2007 application themes.

- All panels in the user interface (e.g. the workspace tree, feature and data windows) can be docked to any of the 4 sides, providing an excellent way of maximising your display area (e.g. wide screen monitors).
- Any user-customisation of the interface is automatically preserved between sessions.



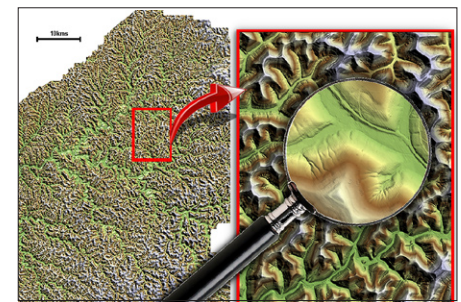
Create complex and immersive 3D environments for visualising and analysing noise or atmospheric pollution, infrastructure positioning and flood risk.

- Layers in the workspace tree can be reordered using drag and drop operations for easier control of complex sessions.
- New view direction controls
- Extensive simplification

Visualise and Grid Massive LIDAR Topographic datasets in MapInfo Professional (Pro only)

New LIDAR LAS Importer

- Import and visualise LIDAR LAS data with existing vector, raster and grid data sets in both 2D and 3D.



Import, interpolate and manipulate massive continental-scale gridded surfaces such as LIDAR topographic data

New Large Multi-File Triangulation Tool

Engage3D Pro can now build very large grids from multiple input files and/or massive data sets such as LIDAR LAS and ASCII data, TAB point and contour files. Interpolate these using triangulation into a single gridded surface.

EXPAND YOUR MODELLING CAPABILITIES BY CREATING REALISTIC MODELS USING SMOOTH INTERPOLATION BETWEEN 3D FEATURES.

Powerful 3D Modelling Capabilities (Pro only)

Engage3D Pro allows the user to accurately digitise, model and experiment with their interpretations directly within the 3D environment. The user is therefore able to model and extrapolate pollution volumes, potential extensions and 'what-if?' scenarios.

Advanced Digitising and Feature Editing

Engage3D Pro v5.0 incorporates advanced 3D feature object digitisation and manipulation capabilities, allowing the user to precisely modify and edit feature polylines, polygons, open triangulated surfaces and closed polyhedral solids.

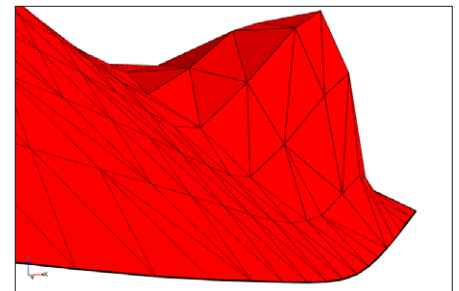
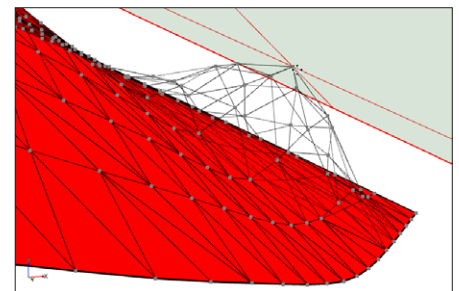
This functionality includes:

- Automatic bonding to selected data types such as 3D points.
- Automatically convert polygons into triangulated (TIN) surfaces.
- Experiment with or refine your wireframe models with full editing capabilities for individual vertices.

These capabilities include the addition and deletion of nodes, the movement of vertices within the surface, or the elastic movement of vertices perpendicular to the cursor plane, all while preserving the surface's integrity.

- The internal structure of a feature database can now be modified after it has been created, e.g. renaming the database, adding new fields or changing field types.
- Improved snapping behavior, including targeting options for triangulated surfaces (vertices, edges or faces).
- A new clipping plane allows less cluttered digitising in complex 3D environments.
- Polylines can be split, merged and extended after creation.

- Split feature surfaces by selecting a contiguous series of internal edges; generating two or more separate feature surfaces (or polygons), or remove internal regions.
- Multiple objects can be aggregated into one record, whilst still preserving each object's spatial integrity.



Extensive 3D solid editing capabilities allow the user to experiment with and refine their 3D models.

Smooth Interpolation Between 3D Features to Create Realistic Models

Engage3D Pro v5.0 further expands your modelling capabilities with the ability to interpolate and grid surfaces between digitised features points and polylines.

This is an excellent way to dynamically pollution extents, water table boundaries, etc, as it creates smoother and more realistic surfaces than possible with wireframing. Gridding methods available include Inverse Distance Weighting, Minimum Curvature and Kriging.

Engage3D™ & Engage3D Pro™ v5.0

ASIA-PACIFIC/AUSTRALIA

Level 7
1 Elizabeth Plaza
North Sydney NSW 2060
+61.2.9437.6255
pbbi.australia@pb.com
pbbi.singapore@pb.com
pbbi.china@pb.com
www.pbinsight.com.au

UNITED STATES

One Global View
Troy, NY 12180-8399
+1.800.327.8627
pbbi.sales@pb.com
www.pbinsight.com

CANADA

26 Wellington Street East
Suite 500
Toronto, ON M5E 1S2
+1.800.327.8627
pbbi.canada.sales@pb.com
www.pbinsight.ca

EUROPE/UNITED KINGDOM

Minton Place
Victoria Street
Windsor, Berkshire SL4 1EG
+44.1753.848200
pbbi.europe@pb.com
www.pbinsight.co.uk



Create Solids from Feature Surfaces

The Solid Generator tool can now build wireframed solids (i.e. volumes) from triangulated surfaces, such as feature surfaces representing the depth to the top and the bottom of the dieothermal layer (interpolated with the Surface Gridding tool).

3D Voxel/Block Models (Pro only)

Voxel models can now be visualised as a slice along any user-defined plane, including inclined planes.

Additional 3D Formats Supported

AutoCAD extruded circle and arc DXF objects, as well as basic ellipse objects.

TO LEARN MORE ABOUT ENGAGE3D AND ENGAGE3D PRO VISIT WWW.PBINSIGHT.COM.AU OR CALL +61.2.9437.6255.

SPECIFICATIONS

Engage3D & Engage3D Pro version 5.0 require:

- MapInfo Professional v8.5 to v10.0, with Windows XP or Vista.