

VERSION COMPARISON

MapInfo® Professional v10.5

DISCOVER A NEW STANDARD OF USABILITY IN LOCATION INTELLIGENCE SOLUTIONS.



Summary

MapInfo Professional, the industry's leading location intelligence desktop solution, enables you to create, edit, visualize, and analyze customer and business data in the context of location.

With the release of MapInfo Professional v10.5, you will benefit from faster map creation and editing, new ways of sharing dynamic output for greater insight, and data connectivity using industry-standard data servers from around the world. MapInfo Professional v10.5—providing the power of location.

HOW DOES V10.5 COMPARE TO PREVIOUS VERSIONS?

MAPINFO PROFESSIONAL v10.5 ADDS:

Metadata Browser

- Search OGC compliant CSW catalogs within your organization or from around the world
- Access the PBBI Worldwide Data Catalog
- Refine search using existing Map window
- Launch multiple searches against multiple servers
- Add files to your map from catalog entries when exposed as: File path; Zip File; WMS; WFS; Tile Server; ...when available

Data Access

- Google KML & KMZ
- Tile Server data services
- Microsoft® Bing™ Maps

User Interface

- Enhanced Toolbars and cursors—improves ease of use and ease of learning
 - Toolbar locations from 3rd party applications are remembered from session to session
- New Icons for MapCAD tools

- One click PDF output
- New toolbar icons for quickly adding Microsoft's Bing Aerial and Bing Hybrid imagery to your maps
- Enhanced Docking—speeds up user operations
 - Dockable Table List window for easy access to apply commonly used capabilities on any table.
 - Dockable Named views window
 - Dockable Metadata Browser
 - Visual Docking guides for easy docking options
 - Support for MBX generated window docking
- Table List Window
 - View all open tables (whether mappable or not)
 - Use dynamic search bar to quickly find the tables you need.
 - Drag and drop tables into maps to quickly add data to existing maps
 - Drag tables to an empty spot to create new maps

MapInfo® Professional v10.5

- Right click on tables to: Select all, Export, View/Update Table Structure, Create Points, or Update a table's column value
- Select one or more tables to: Add to an existing map, create a new map, browse or close the tables at once
- Use MapBasic to modify the menu and add or remove commands
- Layer Control Improvements:
 - Right click to Browse table
 - Right click to Add style override
 - Right click to Add label override
 - Drag one or more style or label override from one layer to another
 - Drag style override from one map to another
- Enhanced Named Views Utility
 - Added toolbar docking persistence support
 - Dockable named views window
 - Enhanced Sync Windows Utility—toolbar icon added for one click synchronization

Better Looking Maps

- Built-in worldwide Aerial and Hybrid imagery
- Stacked style support (create new map object styles on the fly)
- Multi-zoom style and label support for easier map creation and less cluttered layer control

Output

- Support for standard PDF
- Support for layered PDF
- Support for Geo-registered PDF
- Support for PDF with attributes
- Support for publishing maps to PBBI web-mapping in the cloud

MapBasic

- Support for creating new Tile Server Table
- Support for saving toolbar docking location
- Support for multi-style and label override
- Support for configuring/enhancing right-click context menu for Table List and Layer Control
- Support for browsing table from Layer Control
- Support for enabling custom dialog docking
- Support for windows docking and persisting docked states for future sessions

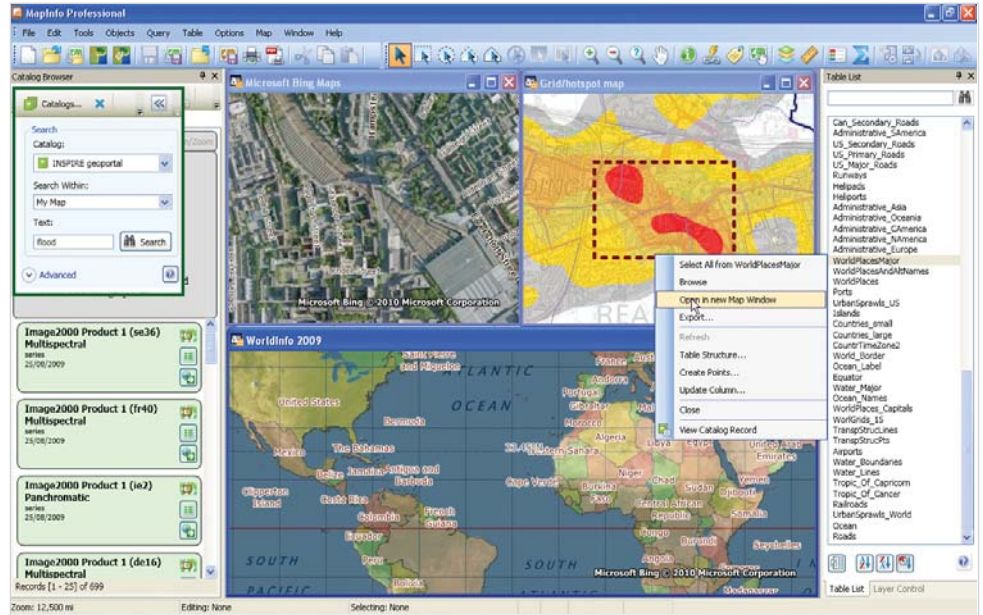
Supported Operating Systems

Desktop Operating Systems:

- Windows® 7 Ultimate
- Windows® 7 Ultimate 64-bit with 32-bit compatibility mode
- Windows® Vista Ultimate SP1
- Windows® XP Professional SP3

Server Operating Systems

- Windows® 2008 Server
- Windows® 2008 Server with Citrix® XenApp 5.5 (this is the new name for Citrix® Presentation Server)
- Windows® 2008 Server R2 64-bit with Citrix® XenApp 6.0



MapInfo Professional v10.5's new configurable user interface.
Enjoy streamlined access to common tasks, search industry-standard data catalogs and more.

MAPINFO PROFESSIONAL v10.0 ADDED:

EASE OF USE/USER INTERFACE

- New Menu and ToolBars
- New Layer Control
 - Modeless layer control
 - Interactive Style swatches
 - Multiple layers operations
 - Layers from different maps can be manipulated
 - Layer Control offers Pause/Resume option
 - Group Layers—Ability to add Group layers is available
 - Tool-tips show file path +name + zoom range

DATA ACCESS

- MS Office 2007 Support
- MS SQL Server 2008 spatial read/write
- PostGIS Read/Write

ENHANCED ANALYSIS/NEW TOOLS

- Calculate and append proportion overlap. Uses:
 - **Retail:** Ability to quickly calculate total population of a drive time based on proportional coverage of a another area with that data
 - **Telco:** Ability to quickly calculate any demographic value based on a coverage signal

PROJECTIONS ADDED

- Ministry of Transport of Quebec Coordinate Systems
- Support for the Popular Visualization CRS/ Mercator coordinate reference system used in Microsoft Virtual Earth and Google Maps
- Added USNG—Ability to display, center the map or populate points in USNG coordinates

MAPBASIC

- Support for Microsoft Office 2007 Access and Excel
- USNGToPoint(string)
- PointToUSNG\$(obj, datumid)
- Create Adornment Statement
- Set Adornment Statement
- GroupLayerInfo function
- LayerListInfo function
- Enhanced Functions
 - WindowInfo() function
 - Server ConnectionNumber
 - Set Map statement

MapInfo® Professional v10.5

MAPINFO PROFESSIONAL v9.5 ADDED:

UNITED STATES

One Global View
Troy, NY 12180
1.800.327.8627
pbbi.sales@pb.com
www.pbinsight.com

CANADA

26 Wellington Street East
Suite 500
Toronto, ON M5E 1S2
1.800.268.3282
pbbi.canada.sales@pb.com
www.pbinsight.ca

EUROPE/UNITED KINGDOM

Minton Place
Victoria Street
Windsor, Berkshire SL4 1EG
+44.1753.848200
pbbi.europe@pb.com
www.pbinsight.co.uk

ASIA PACIFIC/AUSTRALIA

Level 7, 1 Elizabeth Plaza
North Sydney NSW 2060
+61.2.9437.6255
pbbi.australia@pb.com
pbbi.singapore@pb.com
pbbi.china@pb.com
www.pbinsight.com.au

ADDITIONAL DEPLOYMENT CAPABILITIES

- New Workgroup installation option allows multiple users to share user customizable files and symbols
- Silent installation and product activation

DATA ACCESS

- Database Support—Oracle 11G
- Improved performance with cached data through indexing both key and geometry columns
- Efficient, progressive cache works on an additive basis, instead of rebuilding the cache
- Default view option improves performance on initial opening of tables
- Unlimited length for MapInfo Professional SQL expressions

BETTER LOOKING MAPS

- Curved labeling enhanced to support user controlled overhangs
- Added automatic positioning of labels around points and centroids—results in more labels on the map
- Support of additional image formats for custom symbols (GIF, JPG, TIF, PNG)
- Support for sub-directory structure for custom symbols
- New set of symbols of public sector assets added
- Automatic smoothing of label text
- Vector and label translucency
- Automatic Anti-aliasing of lines and borders
- Improved print engine, including a new printing method

DATUM ENHANCEMENTS

Sweden; Turkey; Croatia; France; Fiji; Egypt; Belgium; Finland; Ireland; Libya; Estonia; Netherlands; Germany; Romania

MAPPING/DATA EDITING

- New Comprehensive Data Editing Package, 40 New Data Editing Functions with configurable button Pads
- Suitable for creating geographic asset information such as: sewers or pipelines at fixed intervals from road or parcel boundaries, pipelines, cables or wires at fixed angles from a road

- Attach text objects from a separate DXF/DWG imported layer into the associated sewer or pipeline layer
- Line direction can easily be changed for the purposes of representing the direction of water flow
- Columns containing coordinates, automatically build lines/polylines
- Copy and paste styles from one object to another
- Select objects by object style
- And much more...

EASE OF USE

- Access layer operations from the right click menu including: View entire layer; Select all from layer; Make layer editable
- Selected objects from the layer highlight the layer in Layer Control for easy layer finding
- Modify table structure by dragging and dropping columns
- Easy to use New Map Window dialog
- Added grid lookup for color, line or pattern.
- Vista/Windows-XP application look
- Newly redesigned named views utility
- Improved selection visualization via enhanced drawing mode

PROGRAMMING ENHANCEMENTS

Programming with .NET

Support for .NET programmability: Design your GUI in .NET and run within MapInfo Professional; or Embed MapInfo Professional inside your .NET application. Write code in VB.NET or C# or any .NET compliant language

NEW MAPBASIC FUNCTIONS

- TableInfo()—Added definition to return CoordSys clause without bounds.
- RasterTableInfo()—Returns information about a Raster or Grid Table
- GridTableInfo()—Return information about a grid file. It will error if the table is not a grid.
- ControlPointInfo()—Return information about control points for image tables.